

TRAUMATIC BRAIN INJURY (TBI) OUTCOMES

TYPES OF PATIENTS SERVED

In 2016, CarePartners Rehabilitation Hospital served 66 patients with a traumatic brain injury (TBI) in our Brain Injury Program.

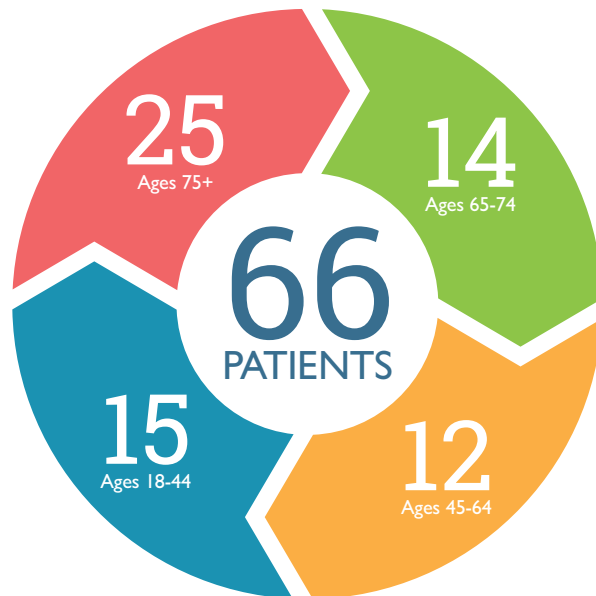
**14.8
DAYS**

HOW LONG OUR PATIENTS STAY

Our patients stay in our Brain Injury rehabilitation program an average of 14.8 days, compared to a national benchmark of 14.2 days.

REHAB CARE PROVIDED

Rehabilitation nursing is provided 24 hours a day. Patients receive an average of 4.5 hours of therapy a day, 5 days a week. Medical services are provided by a physician who is specially trained in brain injury rehabilitation.



HOW OUR PATIENTS IMPROVE

We use a scoring system known as the FIM™ that measures the improvement patients make in specific functional tasks such as eating, personal care, walking, communicating and memory.

WHERE OUR PATIENTS GO AFTER REHAB

Our goal is for our patients to return to a community setting whenever possible. Many times this is dependent upon the support and availability of caregivers in the home, so we work closely with families to teach them how to care for their loved one at home.



MEETING REHABILITATION GOALS

94%
OF PATIENTS
met their individual goals

PATIENT SATISFACTION

91%
OF PATIENTS
CarePartners
REHABILITATION HOSPITAL
rated the Brain Injury Program
“EXCELLENT” or “VERY GOOD”
IN OVERALL QUALITY OF CARE

FIM™ is a trademark of Uniform Data System for Medical Rehabilitation, a division of UB Foundation Activities, Inc.

HIP FRACTURE OUTCOMES

TYPES OF PATIENTS SERVED

In 2016, CarePartners Rehabilitation Hospital served **99** patients with a primary diagnosis of hip fracture. 58 of those patients were female; 41 were male.

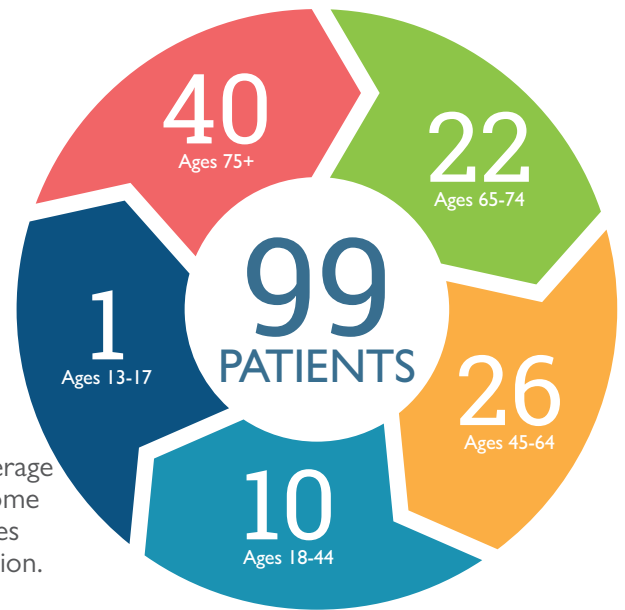
11.9
DAYS

HOW LONG OUR PATIENTS STAY

Our patients stay in our inpatient rehabilitation program an average of 11.9 days, compared to a national benchmark of 11.9 days.

REHAB CARE PROVIDED

Rehabilitation nursing is provided 24 hours a day. Patients receive an average of 3 hours of therapy a day, 5 days a week. Based on individual need, some patients receive 15 hours of therapy over a 7-day period. Medical services are provided by a physician who is specially trained in physical rehabilitation.



HOW OUR PATIENTS IMPROVE

We use a scoring system known as the *FIM™* that measures the improvement patients make in specific functional tasks such as eating, personal care, walking, communicating and memory.

WHERE OUR PATIENTS GO AFTER REHAB

Our goal is for our patients to return to a community setting whenever possible. Many times this is dependent upon the support and availability of caregivers in the home, so we work closely with families to teach them how to care for their loved one at home.



MEETING REHABILITATION

GOALS

93%

OF PATIENTS
met their individual goals

PATIENT SATISFACTION

98TH PERCENTILE

CarePartners

REHABILITATION HOSPITAL
ranked higher than 97% of other
inpatient rehabilitation programs
in OVERALL QUALITY OF CARE

FIM™ is a trademark of Uniform Data System for Medical Rehabilitation, a division of UB Foundation Activities, Inc.

STROKE OUTCOMES

TYPES OF PATIENTS SERVED

In 2016, CarePartners Rehabilitation Hospital served 390 patients in our Stroke Program. The average age of our stroke patients was 71 years. 16 of our stroke patients were under the age of 45. 210 of our stroke patients were male: 180 were female.

**16.1
DAYS**

HOW LONG OUR PATIENTS STAY

Our patients stay in our Stroke rehabilitation program for an average of 16.1 days, compared to a national benchmark of 15.2 days.

REHAB CARE PROVIDED

Rehabilitation nursing is provided 24 hours a day. Patients receive an average of 3 hours of therapy a day, 5 days a week. Based on individual need, some patients receive 15 hours of therapy over a 7-day period. Medical services are provided by a physician who is specially trained in stroke rehabilitation.

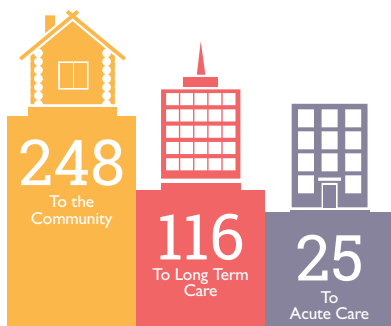


HOW OUR PATIENTS IMPROVE

We use a scoring system known as the FIM™ that measures the improvement patients make in specific functional tasks such as eating, personal care, walking, communicating and memory.

WHERE OUR PATIENTS GO AFTER REHAB

Our goal is for our patients to return to a community setting whenever possible. Many times this is dependent upon the support and availability of caregivers in the home, so we work closely with families to teach them how to care for their loved one at home.



MEETING REHABILITATION GOALS

84%
OF PATIENTS
met their individual goals

PATIENT SATISFACTION

99TH
PERCENTILE

CarePartners
REHABILITATION HOSPITAL
STROKE PROGRAM
ranked higher than 98% of other
inpatient rehabilitation programs
in OVERALL QUALITY OF CARE

FIM™ and UDSPRO® are trademarks of Uniform Data System for Medical Rehabilitation, a division of UB Foundation Activities, Inc.

REHABILITATION HOSPITAL PATIENT OUTCOMES

TYPES OF PATIENTS SERVED

In 2016, CarePartners Rehabilitation Hospital served 1,289 patients, 13 years of age or older. 579 of those patients were female; 710 were male.

13.7 DAYS

HOW LONG OUR PATIENTS STAY

Our patients stay in our inpatient rehabilitation program for an average of 13.8 days, compared to a national benchmark of 13.3 days.

REHAB CARE PROVIDED

Rehabilitation nursing is provided 24 hours a day. Patients receive a minimum of 3 hours of therapy a day, 5 days a week. Based on individual need, some patients receive 15 hours of therapy over a 7-day period. Medical services are provided by a physician who is specially trained in rehabilitation.

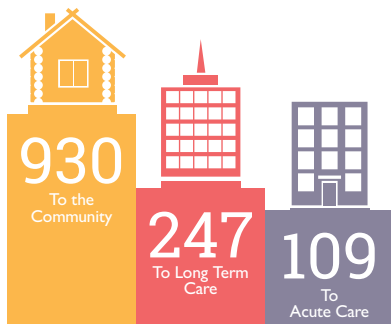


HOW OUR PATIENTS IMPROVE

We use a scoring system known as the *FIM*[™] that measures the improvement patients make in specific functional tasks such as eating, personal care, walking, communicating and memory.

WHERE OUR PATIENTS GO AFTER REHAB

Our goal is for our patients to return to a community setting whenever possible. Many times this is dependent upon the support and availability of caregivers in the home, so we work closely with families to teach them how to care for their loved one at home.



MEETING REHABILITATION GOALS

90.3%

OF PATIENTS met their individual goals

PATIENT SATISFACTION

98TH

PERCENTILE

CarePartners
REHABILITATION HOSPITAL ranked higher than 97% of other inpatient rehabilitation programs in OVERALL QUALITY OF CARE

FIM[™] and *UDSPRO*[®] are trademarks of Uniform Data System for Medical Rehabilitation, a division of UB Foundation Activities, Inc.

LOWER EXTREMITY AMPUTATION OUTCOMES

TYPES OF PATIENTS SERVED

In 2016, CarePartners Rehabilitation Hospital served 50 patients with a primary rehab diagnosis of lower extremity amputation. 35 of these patients were male; 15 were female. One patient was an adolescent. The average age was 63 years.

**11.9
DAYS**

HOW LONG OUR PATIENTS STAY

Our patients stay in our inpatient rehabilitation program after a lower extremity amputation an average of 11.9 days, compared to a national benchmark of 12.7 days.

REHAB CARE PROVIDED

Rehabilitation nursing is provided 24 hours a day. Patients receive an average of 3 hours of therapy a day, 5 days a week. Based on individual need, some patients receive 15 hours of therapy over a 7-day period. Medical services are provided by a physician who is specially trained in physical rehabilitation.



HOW OUR PATIENTS IMPROVE

We use a scoring system known as the FIM™ that measures the improvement patients make in specific functional tasks such as eating, personal care, walking, communicating and memory. Improvement scores are indicated on the arrow to the left.

WHERE OUR PATIENTS GO AFTER REHAB

Our goal is for our patients to return to a community setting whenever possible. Many times this is dependent upon the support and availability of caregivers in the home, so we work closely with families to teach them how to care for their loved one at home.



MEETING REHABILITATION GOALS

91%
OF PATIENTS
met their individual goals

PATIENT SATISFACTION

98TH
PERCENTILE

CarePartners
REHABILITATION HOSPITAL
ranked higher than 97% of other
inpatient rehabilitation programs
in OVERALL QUALITY OF CARE

FIM™ and UDSPRO® are trademarks of Uniform Data System for Medical Rehabilitation, a division of UB Foundation Activities, Inc.

SPINAL CORD INJURY (SCI) OUTCOMES

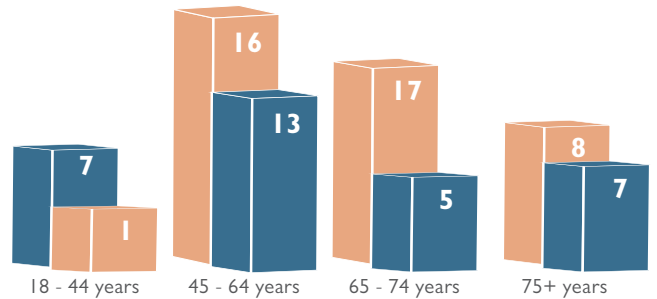
TYPES OF PATIENTS SERVED

In 2016, CarePartners Rehabilitation Hospital served 74 patients with a primary diagnosis of traumatic (TSCI = 32 patients, in blue) and non-traumatic spinal cord injury (NTSCI = 42 patients, in orange).

**22.2
DAYS**

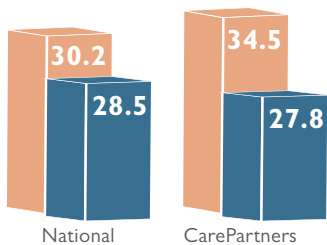
HOW LONG OUR PATIENTS STAY

Our patients stay in our inpatient rehabilitation program an average of 22.2 days, compared to a national benchmark of 20.7 days.



REHAB CARE PROVIDED

Rehabilitation nursing is provided 24 hours a day. Patients receive an average of 4 hours of therapy a day, 5 days a week. Medical services are provided by a physician who is specially trained in spinal cord rehabilitation.

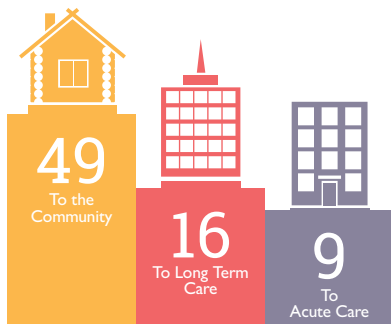


HOW OUR PATIENTS IMPROVE

We use a scoring system known as the FIM™ that measures the improvement patients make in specific functional tasks such as eating, personal care, communicating and memory. (blue for TSCI, orange for NTSCI)

WHERE OUR PATIENTS GO AFTER REHAB

Our goal is for our patients to return to a community setting whenever possible. Many times this is dependent upon the support and availability of caregivers in the home, so we work closely with families to teach them how to care for their loved one at home.



MEETING REHABILITATION GOALS

94%
OF PATIENTS
met their individual goals

PATIENT SATISFACTION

98TH
PERCENTILE

CarePartners
REHABILITATION HOSPITAL
ranked higher than 97% of other
inpatient rehabilitation programs
in OVERALL QUALITY OF CARE

FIM™ and UDSPRO® are trademarks of Uniform Data System for Medical Rehabilitation, a division of UB Foundation Activities, Inc.

JOINT REPLACEMENT OUTCOMES

TYPES OF PATIENTS SERVED

In 2016, CarePartners Rehabilitation Hospital served 33 patients following a joint replacement surgery. The average age was 66 years.

**9.8
DAYS**

HOW LONG OUR PATIENTS STAY

Our patients stay in our inpatient rehabilitation program an average of 9.8 days, compared to a national benchmark of 9.0 days.

REHAB CARE PROVIDED

Rehabilitation nursing is provided 24 hours a day. Patients receive an average of 3 hours of therapy a day, 5 days a week. Based on need, some patients receive 15 hours of therapy over a 7-day period. Medical services are provided by a physician who is specially trained in rehabilitation..

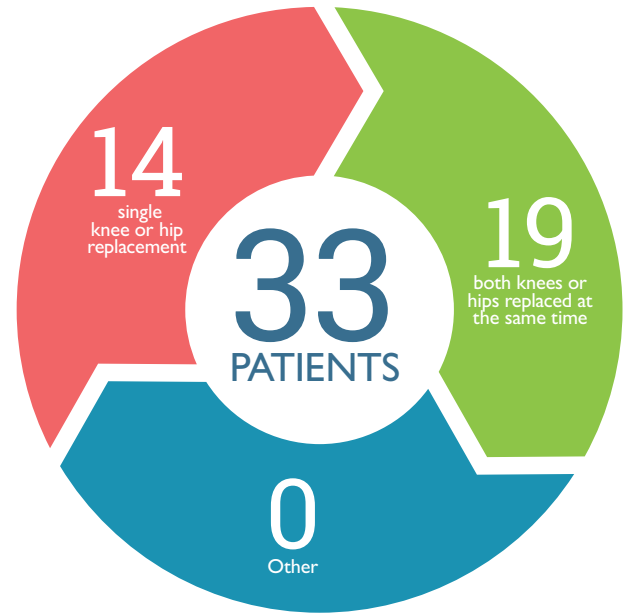
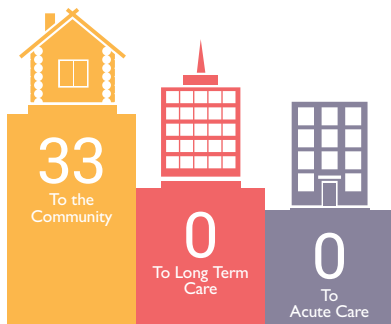


HOW OUR PATIENTS IMPROVE

We use a scoring system known as the FIM™ that measures the improvement patients make in specific functional tasks such as eating, personal care, walking, communicating and memory.

WHERE OUR PATIENTS GO AFTER REHAB

Our goal is for our patients to return to a community setting whenever possible. Many times this is dependent upon the support and availability of caregivers in the home, so we work closely with families to teach them how to care for their loved one at home.



MEETING REHABILITATION GOALS

100%
OF PATIENTS
met their individual goals

PATIENT SATISFACTION

98TH
PERCENTILE
CarePartners
REHABILITATION HOSPITAL
ranked higher than 97% of other
inpatient rehabilitation programs
in OVERALL QUALITY OF CARE

FIM™ and UDSPRO® are trademarks of Uniform Data System for Medical Rehabilitation, a division of UB Foundation Activities, Inc.

CARDIAC OUTCOMES

TYPES OF PATIENTS SERVED

In 2016, CarePartners Rehabilitation Hospital served 99 patients with a primary diagnosis of a cardiac condition or surgery. 56 of those patients were male; 43 were female.

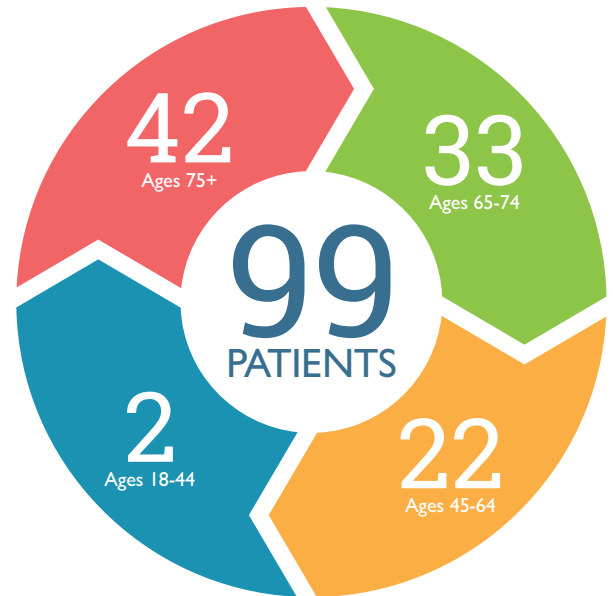
**10.4
DAYS**

HOW LONG OUR PATIENTS STAY

Our patients stay in our inpatient rehabilitation program an average of 10.4 days, compared to a national benchmark of 10.4 days.

REHAB CARE PROVIDED

Rehabilitation nursing is provided 24 hours a day. Patients receive an average of 3 hours of therapy a day, 5 days a week. Based on individual need, some patients receive 15 hours of therapy over a 7-day period. Medical services are provided by a physician who is specially trained in physical rehabilitation..

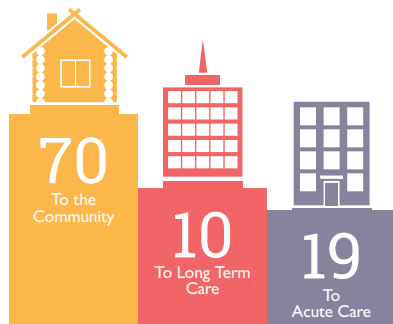


HOW OUR PATIENTS IMPROVE

We use a scoring system known as the FIM™ that measures the improvement patients make in specific functional tasks such as eating, personal care, walking, communicating and memory.

WHERE OUR PATIENTS GO AFTER REHAB

Our goal is for our patients to return to a community setting whenever possible. Many times this is dependent upon the support and availability of caregivers in the home, so we work closely with families to teach them how to care for their loved one at home.



MEETING REHABILITATION
GOALS
94%
OF PATIENTS
met their individual goals

**PATIENT
SATISFACTION**
98TH
PERCENTILE
CarePartners
REHABILITATION HOSPITAL
ranked higher than 97% of other
inpatient rehabilitation programs
in OVERALL QUALITY OF CARE

FIM™ and UDSPRO® are trademarks of Uniform Data System for Medical Rehabilitation, a division of UB Foundation Activities, Inc.

NON-TRAUMATIC BRAIN INJURY

TYPES OF PATIENTS SERVED

In 2016, CarePartners Rehabilitation Hospital served 79 patients with a non-traumatic brain injury (NTBI) in our Brain Injury Program.

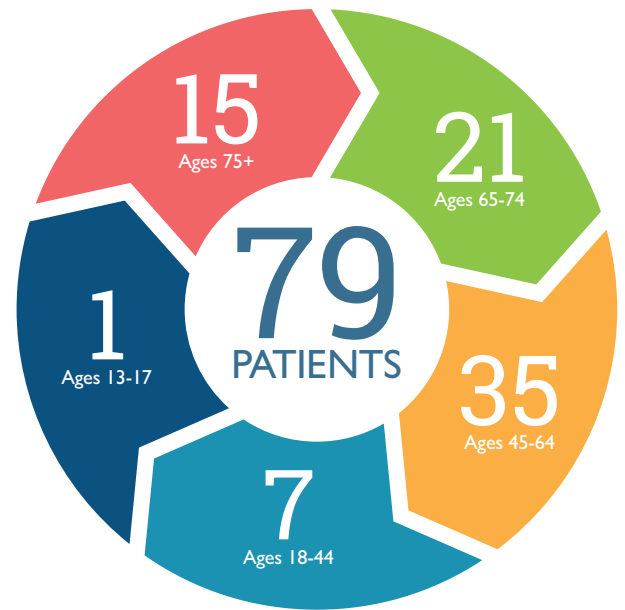
**13.2
DAYS**

HOW LONG OUR PATIENTS STAY

Our patients stay in our inpatient rehabilitation program an average of 13.2 days, compared to a national benchmark of 11.7 days.

REHAB CARE PROVIDED

Rehabilitation nursing is provided 24 hours a day. Patients receive an average of 3 hours of therapy a day, 5 days a week. Based on individual need, some patients receive 15 hours of therapy over a 7-day period. Medical services are provided by a physician who is specially trained in physical rehabilitation..



HOW OUR PATIENTS IMPROVE

We use a scoring system known as the FIM™ that measures the improvement patients make in specific functional tasks such as eating, personal care, walking, communicating and memory.

WHERE OUR PATIENTS GO AFTER REHAB

Our goal is for our patients to return to a community setting whenever possible. Many times this is dependent upon the support and availability of caregivers in the home, so we work closely with families to teach them how to care for their loved one at home.



MEETING REHABILITATION GOALS

95%
OF PATIENTS
met their individual goals

PATIENT SATISFACTION

91%
OF PATIENTS
CarePartners
REHABILITATION HOSPITAL
rated the Brain Injury Program
"EXCELLENT" or "VERY GOOD"
IN OVERALL QUALITY OF CARE

FIM™ and UDSPRO® are trademarks of Uniform Data System for Medical Rehabilitation, a division of UB Foundation Activities, Inc.

MAJOR MULTIPLE TRAUMA OUTCOMES

TYPES OF PATIENTS SERVED

In 2016, CarePartners Rehabilitation Hospital served 58 patients with a primary diagnosis of Major Multiple Trauma. 41 of those patients were male; 17 were female.

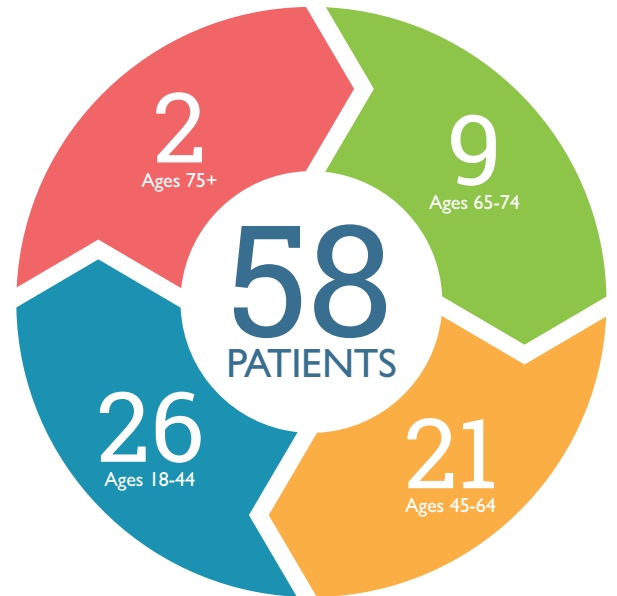
**14.5
DAYS**

HOW LONG OUR PATIENTS STAY

Our patients stay in our inpatient rehabilitation program an average of 14.5 days, compared to a national benchmark of 13.3 days.

REHAB CARE PROVIDED

Rehabilitation nursing is provided 24 hours a day. Patients receive an average of 3 hours of therapy a day, 5 days a week. Based on individual need, some patients receive 15 hours of therapy over a 7-day period. Medical services are provided by a physician who is specially trained in physical rehabilitation..



HOW OUR PATIENTS IMPROVE

We use a scoring system known as the FIM™ that measures the improvement patients make in specific functional tasks such as eating, personal care, walking, communicating and memory.

WHERE OUR PATIENTS GO AFTER REHAB

Our goal is for our patients to return to a community setting whenever possible. Many times this is dependent upon the support and availability of caregivers in the home, so we work closely with families to teach them how to care for their loved one at home.



MEETING REHABILITATION
GOALS
95%
OF PATIENTS
met their individual goals

**PATIENT
SATISFACTION**
98TH
PERCENTILE
CarePartners
REHABILITATION HOSPITAL
ranked higher than 97% of other
inpatient rehabilitation programs
in OVERALL QUALITY OF CARE

FIM™ and UDSPRO® are trademarks of Uniform Data System for Medical Rehabilitation, a division of UB Foundation Activities, Inc.